

**Solder Paste / Red Glue Stencil / Copper Mask /
Resin Mask Auto Cleaning Machine**

MT-2800
AQUEOUS STENCIL
CLEANING MACHINE

*"Best alternative solutions for
all of your SMT needs".*





MT-2800 AQUEOUS STENCIL CLEANING MACHINE

INNER PARTS PICTURES



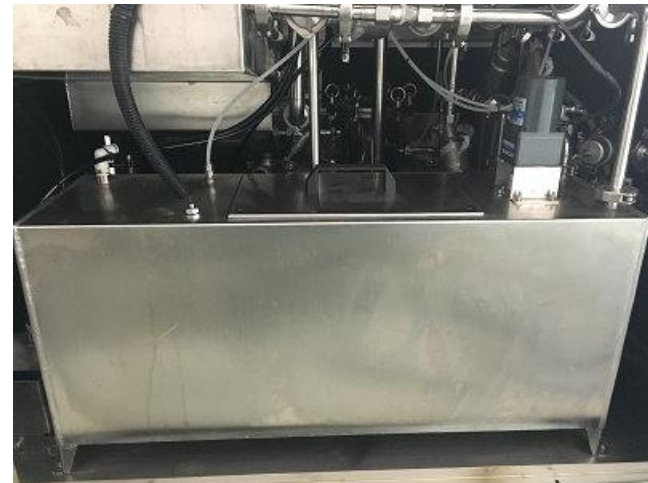
Filter



Air Blower



Distribution Box



Cleaner Tank

STENCIL CLEANING MACHINE APPLICATION FIELDS

Removes any remaining solder paste, glue and flux on SMT Stencil , Copper Mask, Resin Mask, Misprint PCB and PCBA.

SME-2800 is the 3rd generation stencil cleaning machine which is designed for the process of “aqueous based cleaner to clean stencil”.

Various steps such as cleaning, rinsing and hot air dry are completed automatically after pushing” start” key on the operation panel.(The unique double 4 spray poles and double 4 air knives device makes clean, rinse and dry perfectly. Real-time cleaner and water filter system to guarantee the cleanliness of stencil.



SMT stencil



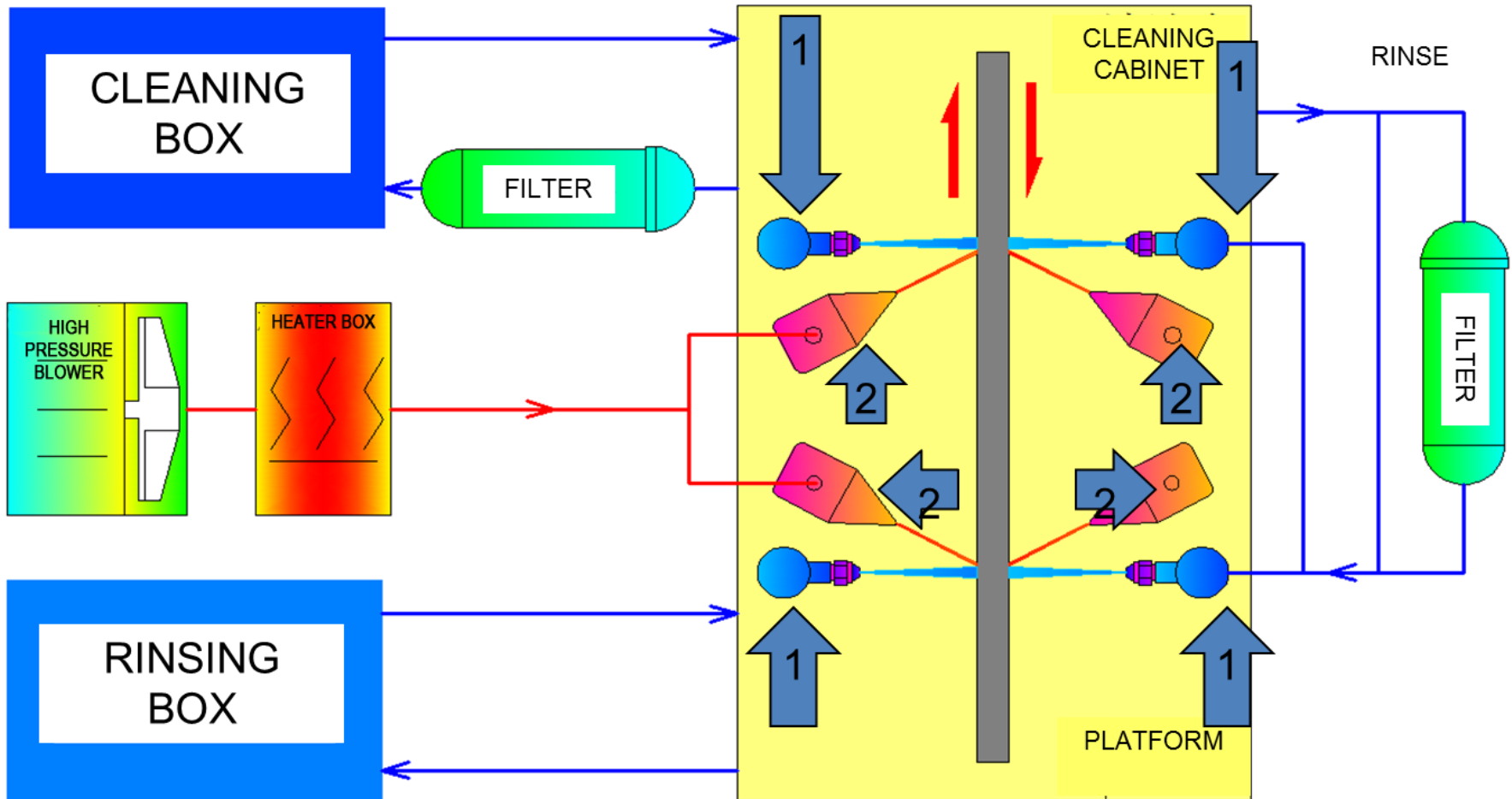
SMT copper mask



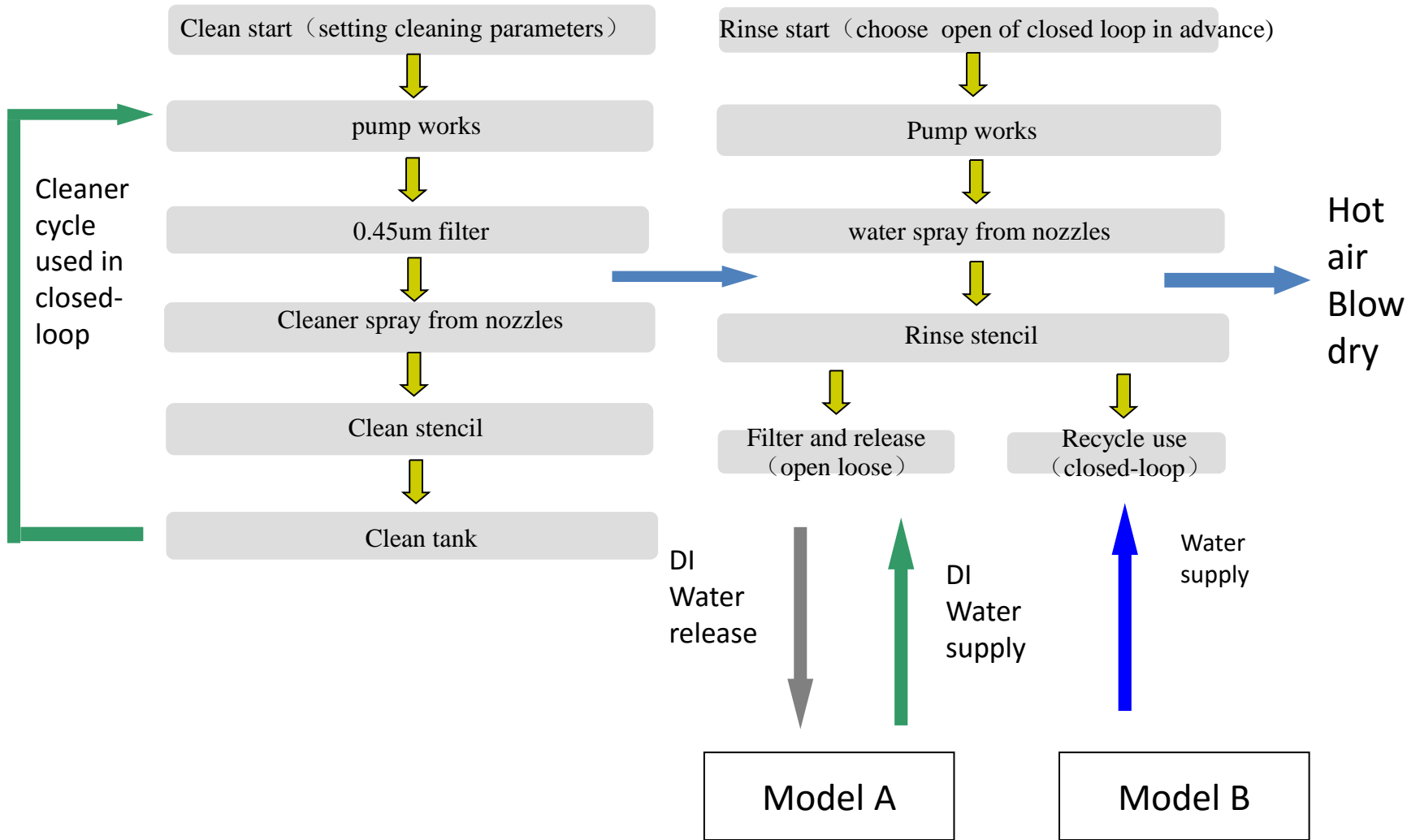
Misprint PCB/PCBA

STENCIL CLEANING SYSTEM SCHEMATIC DRAWING

The unique design of 4 clean and rinse poles (Figure 1, each clean pole has 20 spray nozzles) and 4 air knives dry device significantly improve cleaning and rinsing efficiency. Real-time filter system to guarantee cleanliness.



STENCIL CLEANING SYSTEM CLEAN FLOW CHART



STENCIL CLEANING SYSTEM FEATURES

1. Quick & super powerful clean result:

Quick and efficient to clean remaining solder paste ,red glue and flux on SMT stencil ,cooper mask, resin mask, misprint PCB and PCBA.

2. Standard aqueous-based cleaner clean mode:

Cleaning , rinsing and hot air dry are completed in a cleaning chamber. a compact machine.

3. Full process visible:

State of the process is visible through a large observation window;

4. Wide application:

SMT stencil ,cooper mask, resin mask, misprint PCB and big size PCBA

5. Real-time DI water resistivity monitoring system:

Real-time measure DI water resistivity and monitoring cleaning effect. Resistivity range 0~18MΩ;

6. Nozzle spray pressure adjustable and symmetrical arrangement design

Solved the tension problem which works on stencil during high pressure cleaning process;

7. Standard Cleaning tank heat system:

Heat the aqueous-based cleaner to emulsified it and makes it exhibited higher activity to significantly improve cleaning efficiency and reduce the cleaning time compare with the cleaner in normal temperature.

STENCIL CLEANING SYSTEM FEATURES

8. Low-cost clean:

The cleaner recycle and purified through our built-in filter system. The remaining cleaner in the pump and pipes are blown off by compressed air and flow back to cleaning tank. This function save cleaner up to 50%.

9. Can used as PCBA cleaning machine to clean PCBA up to 800mmx800mm

10. High pressure blower+ 4 air knives hot air dry system:

5.5HP High pressure blower great improved dry efficiency (3~5Min).

11. Chinese Touch Panel operational interface:

Color TP, PLC procedure operation system, cleaner temperature, clean time , rinse time and rinse times , clean temperature, hot air dry time and temperature, resistivity can be set and monitored as required.

STENCIL CLEANING SYSTEM SPECIFICATIONS

1. Stencil size: 750(L) × 750(W) × 40(T)mm as max
2. Cleaning Tank Capacity: 50L* 2PCS
3. Clean Method: Cleaner spray to stencil from 4 poles while stencil moves back and forth driving by motor.
4. Rinse Method: open-loop DI water spray or closed-loop water spray
5. Dry Method: 4 air knives air blow dry
6. Clean Time: 2~5Min
7. Clean Isolation Time: 1Min
8. Rinse Time: 2~5Min
9. Dry Time: 3~5Min
10. Resistivity Tester Range: 0~18MΩ
11. Cleaner/Water Heat Temperature: normal temp~60°C
12. Cleaner Heater Power : 9KW
13. Rinse Water Heat Power: 9KW
14. Noise: less than 65db
15. Dry Temperature: normal temp~90°C
16. Dry Heater Power: 9KW

STENCIL CLEANING SYSTEM FEATURES

- 17.Total Power: 33KW , normal working power is only 3~6KW
- 18.Cleaner Filter Fineness: 0.45μm
- 19.(DI)Water Filter Fineness: 0.45μm
- 20.(DI) Water Supply: 30~60L/min
- 21.(DI)water pressure: ≤0.4mpa
- 22.Pump: 4HP SUS Multi-stage centrifugal pump
- 23.Air Vent Size: Φ123mm
- 24.Power/Air Supply: AC380V 50HZ 90A / 0.5Mpa-----0.7Mpa
- 25.Machine Weight: 500Kg
- 26.Machine Outline: 1500mm(L) × 1260mm(W) × 1900mm(H)