



Shenzhen Mactech Electronics Co., Ltd.

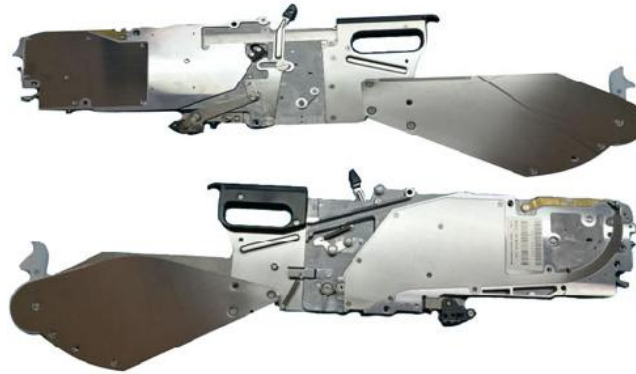
SMT SOLUTIONS

JUKI ELECTRONIC FEEDER ADVANTAGE

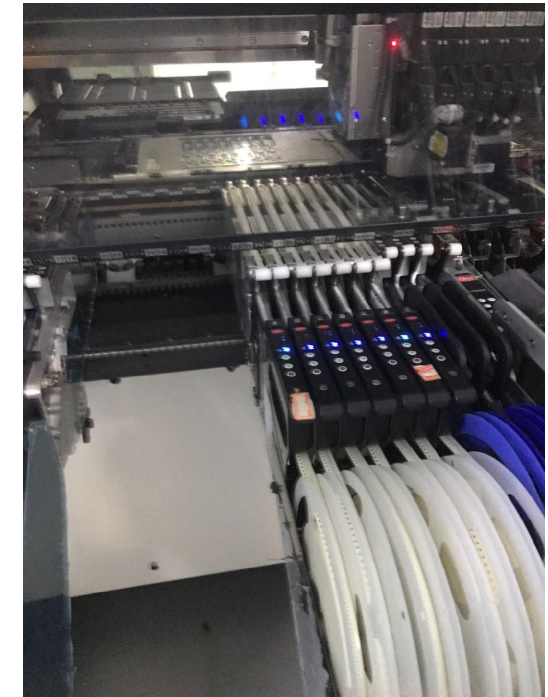
FOR JUKI KE700/2000/3000/JX Series



JUKI® ELECTRONIC FEEDER



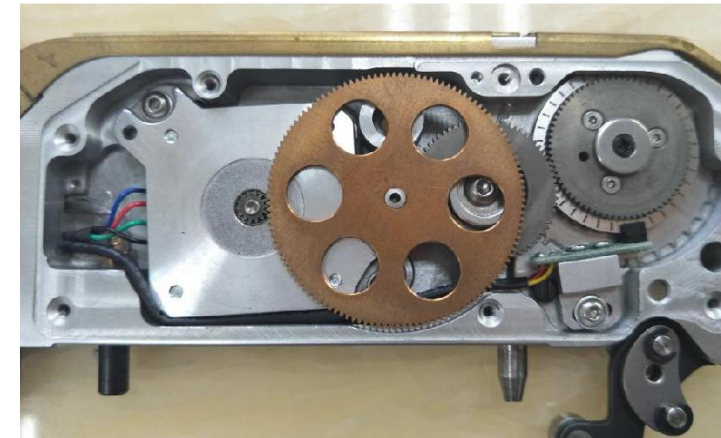
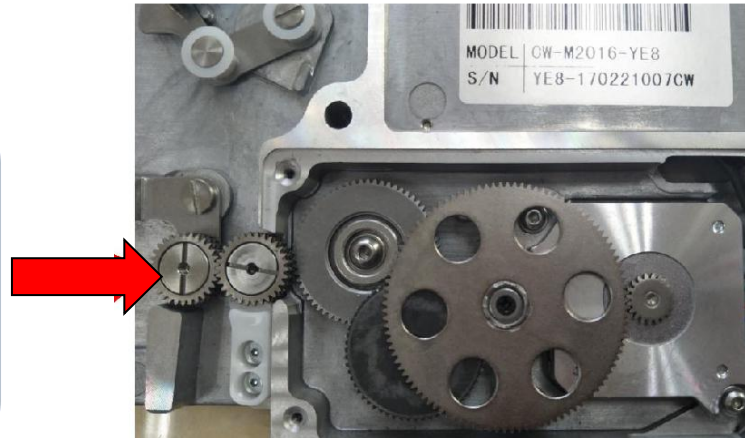
SHENZHEN MACTECH ELECTRONICS CO., LTD.



High efficiency / High-performance

- ✧ With precision servo motor, Feeder can do fine-tune at the component pick up position in order to component pick up simultaneously, increasing pick-up efficiency up to 6-10% approximately.
- ✧ With waste cover automatic winding down function, machine can do auto-splicing without stopping the machine. Motor driven waste cover passage gear, eliminates failure for waste tape flow error, solving the curling problem of waste cover of YAMAHA mechanical feeder.

CONSISTENT
WASTE COVER
DOWNWARD
MOVEMENT



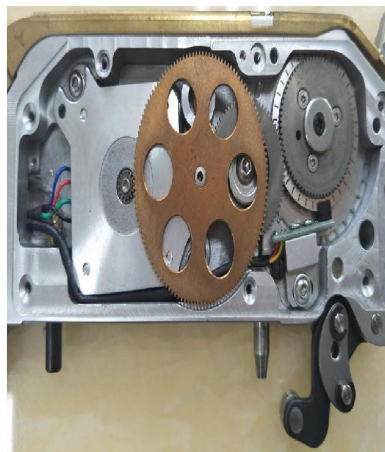
Low cost / High Output

With our new electronic feeder, machine is capable to reach its full capacity.

Rear left hand
hooks



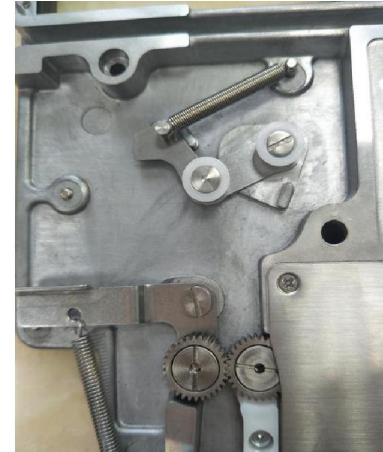
High performance
servo motors



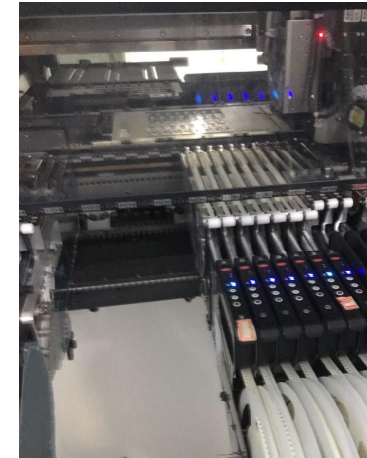
Copper alloy tape
guide



Left and right
waste cover gear



Pin conduct
power





ELECTRONIC FEEDER DESIGN FEATURES

Body: high rigidity aluminum die casting CNC machining, better mechanical stability, high output consistency

Tape Guide: brass alloy, High-precision molding, not magnetic and high dimensional accuracy and 0201 components, more stable compared to other brands

Feed: high accuracy servo motor + high-precision gear group, feeding more stable

Waste Cover Movement: With left and right gear sealed, waste cover will move down more powerful and smooth while driven by motor.

Position: Component pick up position at Y axis can be adjustable, recognize all nozzles pick-up simultaneously.

High speed: with air switch signal, all nozzles can pick up the component simultaneously in the same feeder

Key: Avoids operation lapses caused by negligence, PITCH switch is dip type.

Multi-function: Adjustable PITCH 2 or 4, one feeder can be used as two types.

Comparison between MT Electronic feeder

1. **One of MT Electronic feeder can work as three type of original feeder. (0201, 0402, 0603 component). Press the key to change feeders' pitch, customer do no need to keep big quantity of different type of feeders. Cost Saving**
2. **MT Electronic feeder price is cheaper than Original Juki mechanical feeder Cost Saving**
3. **Auto splicing: cover tape will go down automatically which will make splicing without stopping machine. Original feeder need to get feeder out once used cover tape wrap full on reel cover of feeder.. Efficiency Improving**
4. **Pick up position Consistence: MT Electricity feeder move more smoothly and accurate, so component Y position is the same from different feeders, nozzle can pick up the component at the same time. Component Y position from Original Juki Mechanical feeder has slightly different, it takes times for nozzle to pick up component from different feeders. Efficiency Improving**
5. **Used Cover Tape hang up problem from original Mechanical feeders: Juki feeder reel cover is easy to get problem, so used cover tape will stop to move.. So feeder must draw out and repair**
6. **Efficiency Improving**
7. **Easy Calibration: MT Electronic Feeder has Y Setting Key, it can adjust Y position by press Key in the SMT machine.**
8. **Easy Maintenance**